

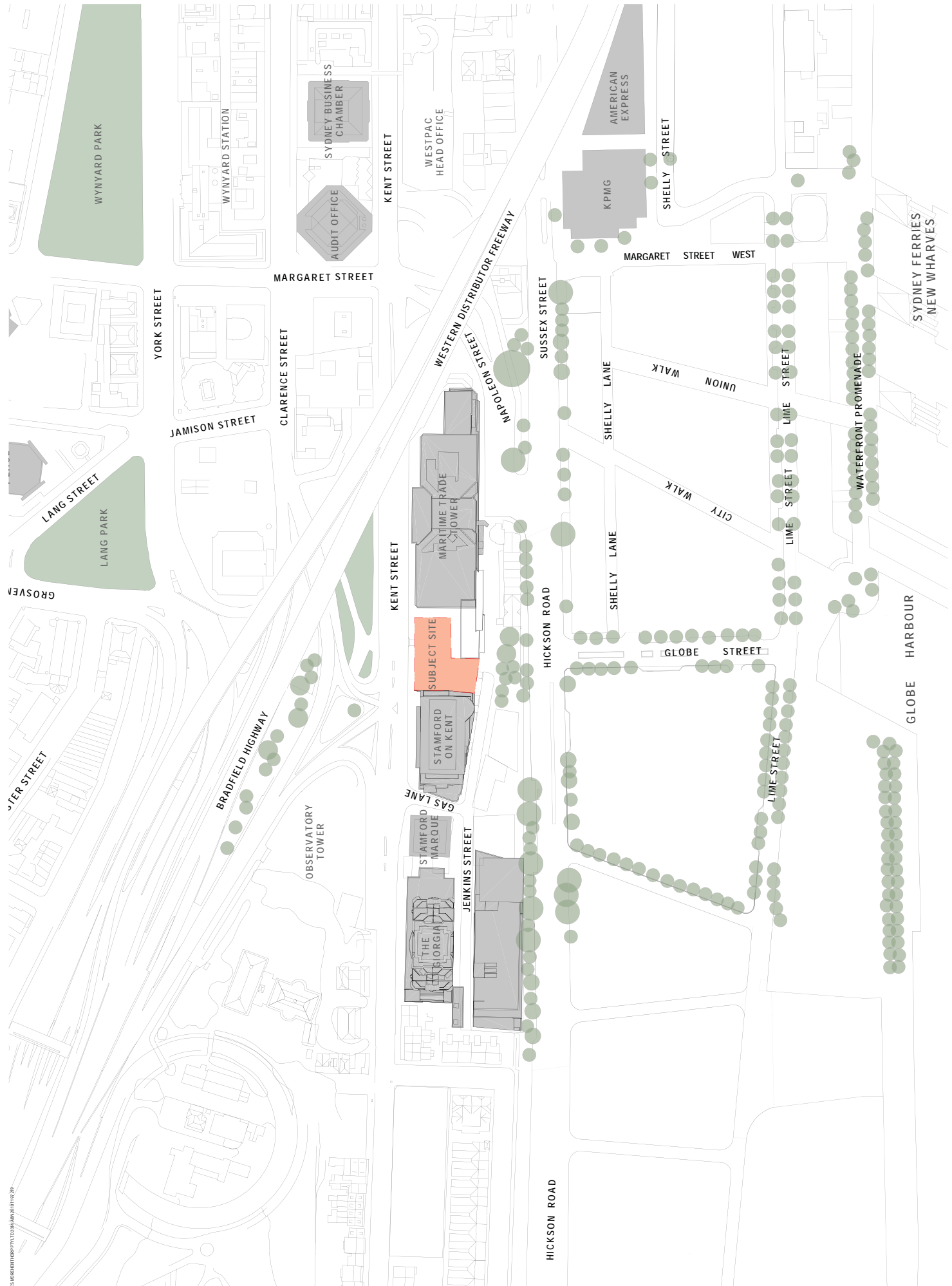
ATTACHMENT A

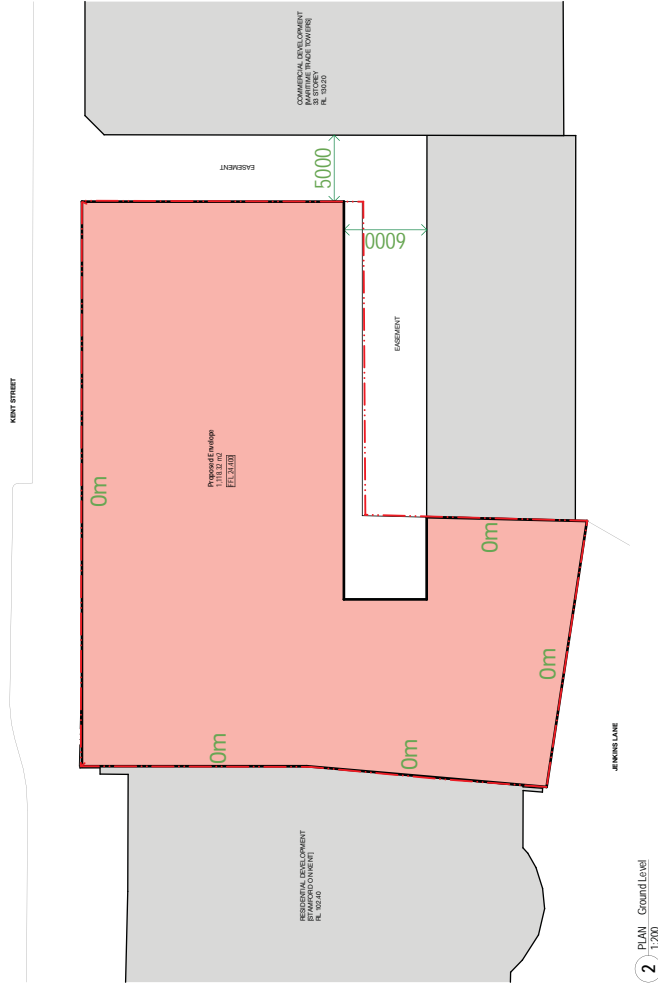
ATTACHMENT A

SELECTED DRAWINGS

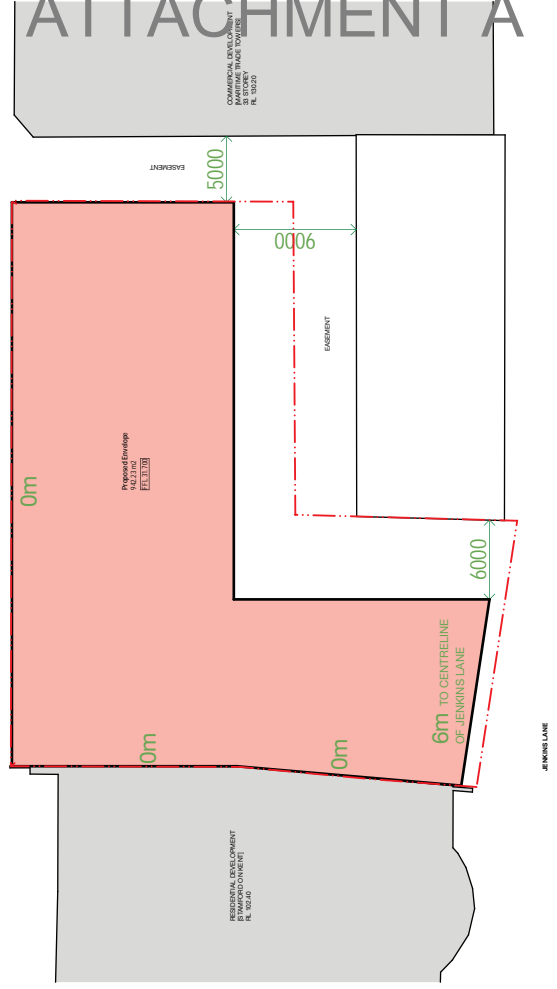
189-197 KENT STREET, SYDNEY

ATTACHMENT A

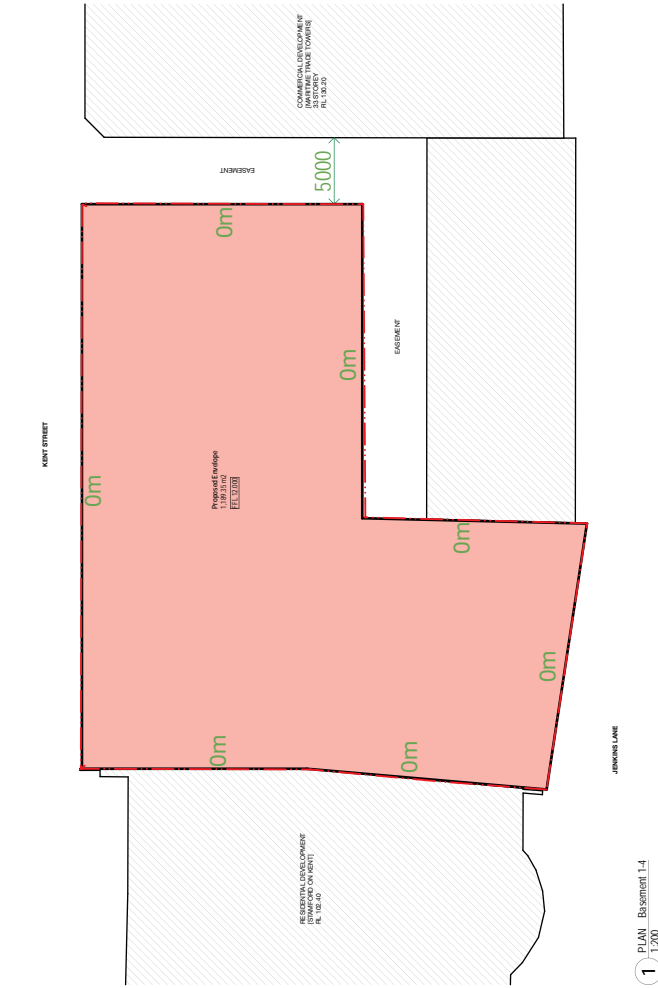




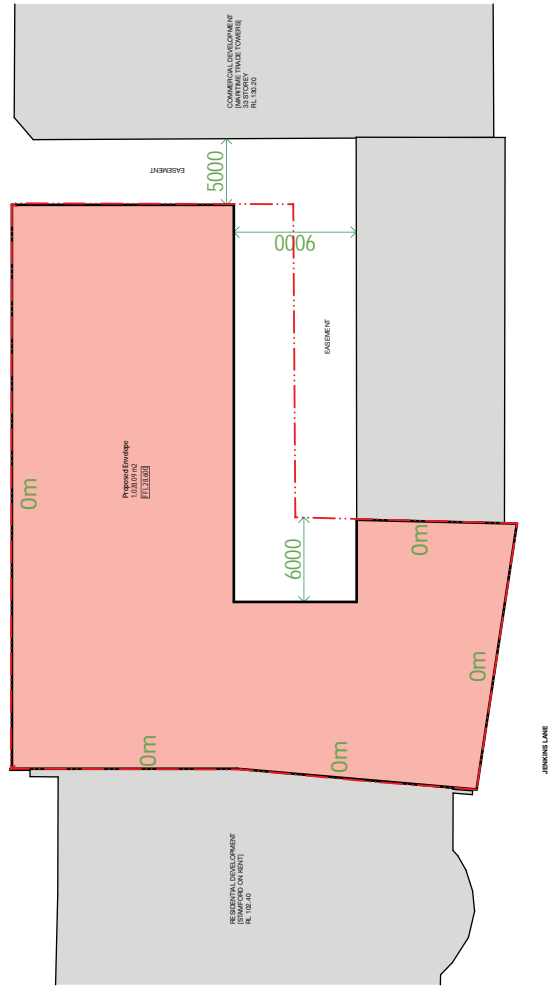
2 PLAN Ground Level 1:200



4 PLAN Level 2 1:200



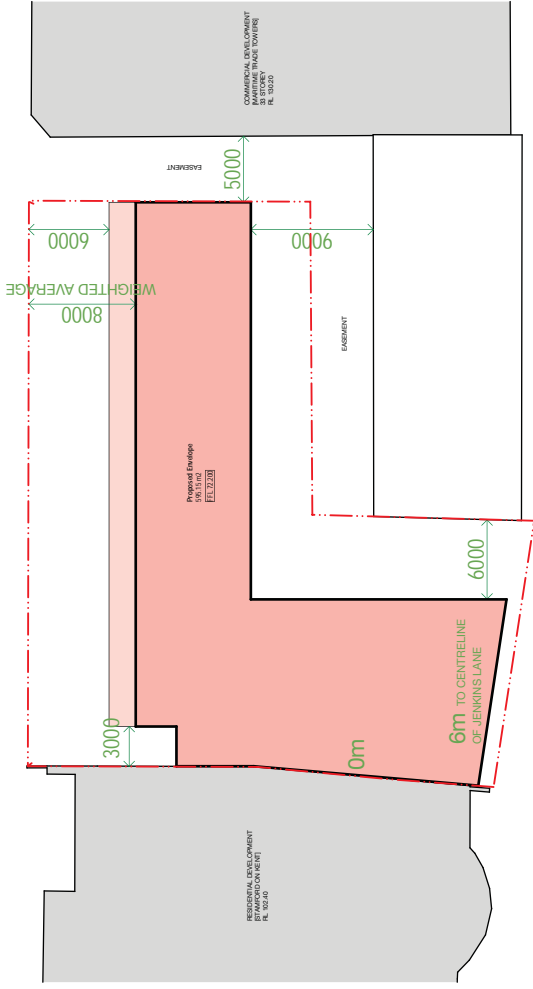
1 PLAN Basement L1 1:200



3 PLAN Level 1 1:200

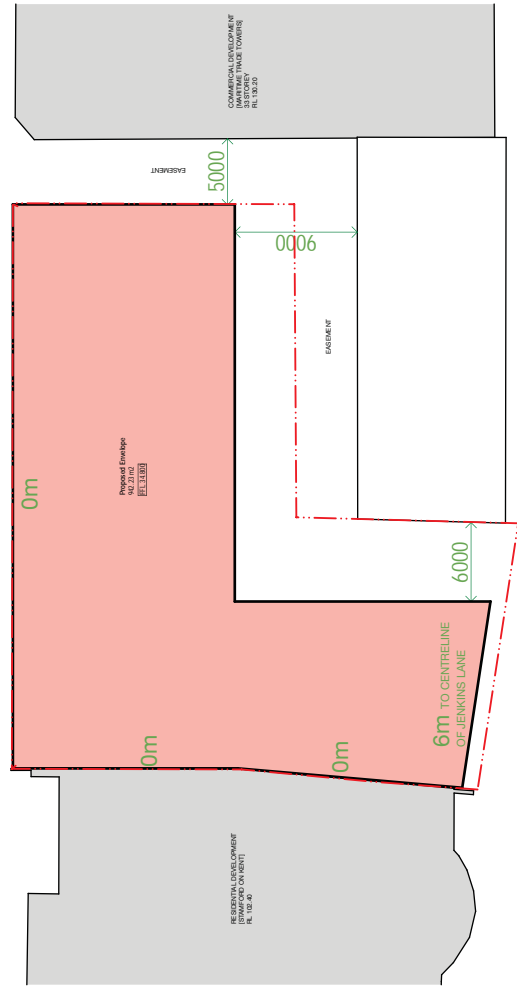
ATTACHMENT A

KENT STREET



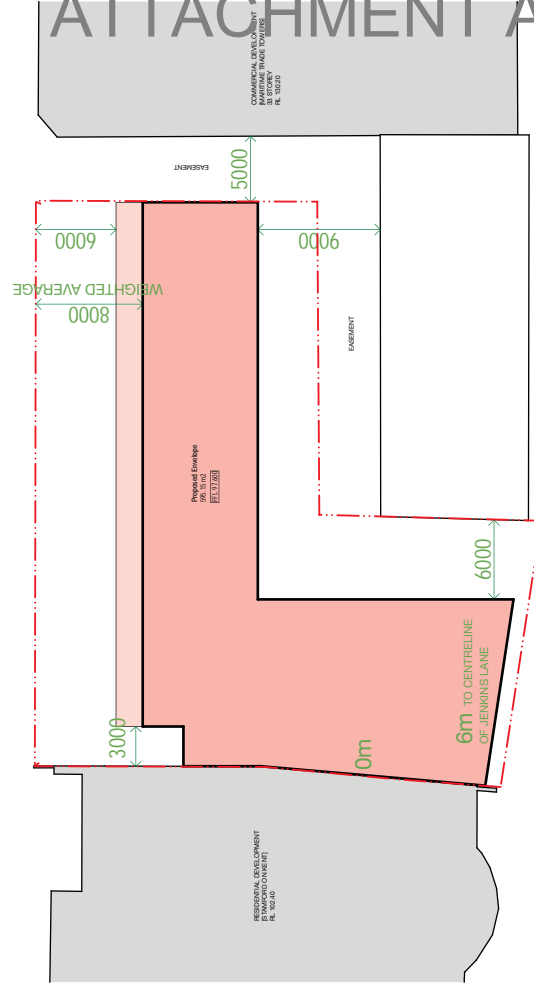
2 PLAN Typical Level 15.21
1:200

KENT STREET



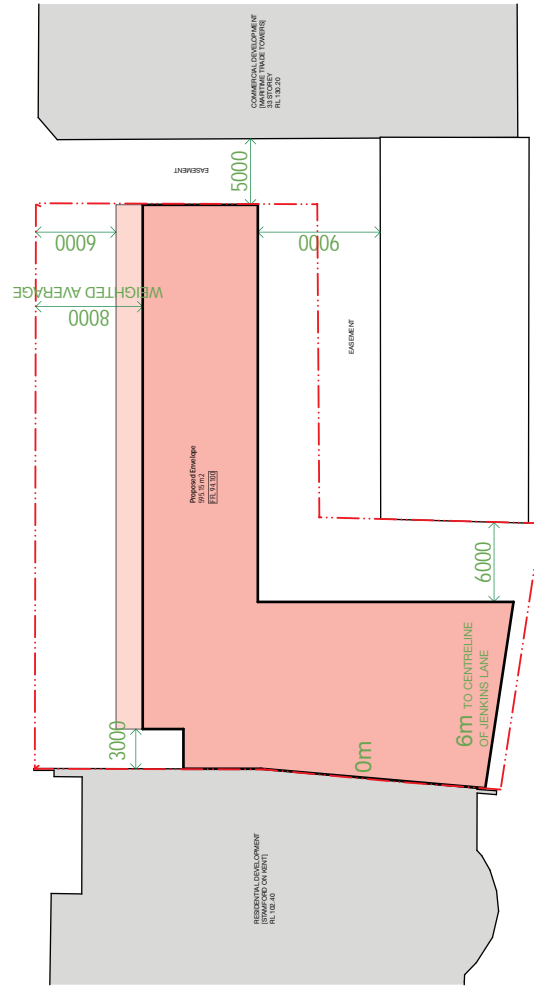
1 PLAN Typical Level 3.14
1:200

KENT STREET



4 PLAN Level 2Z
1:200

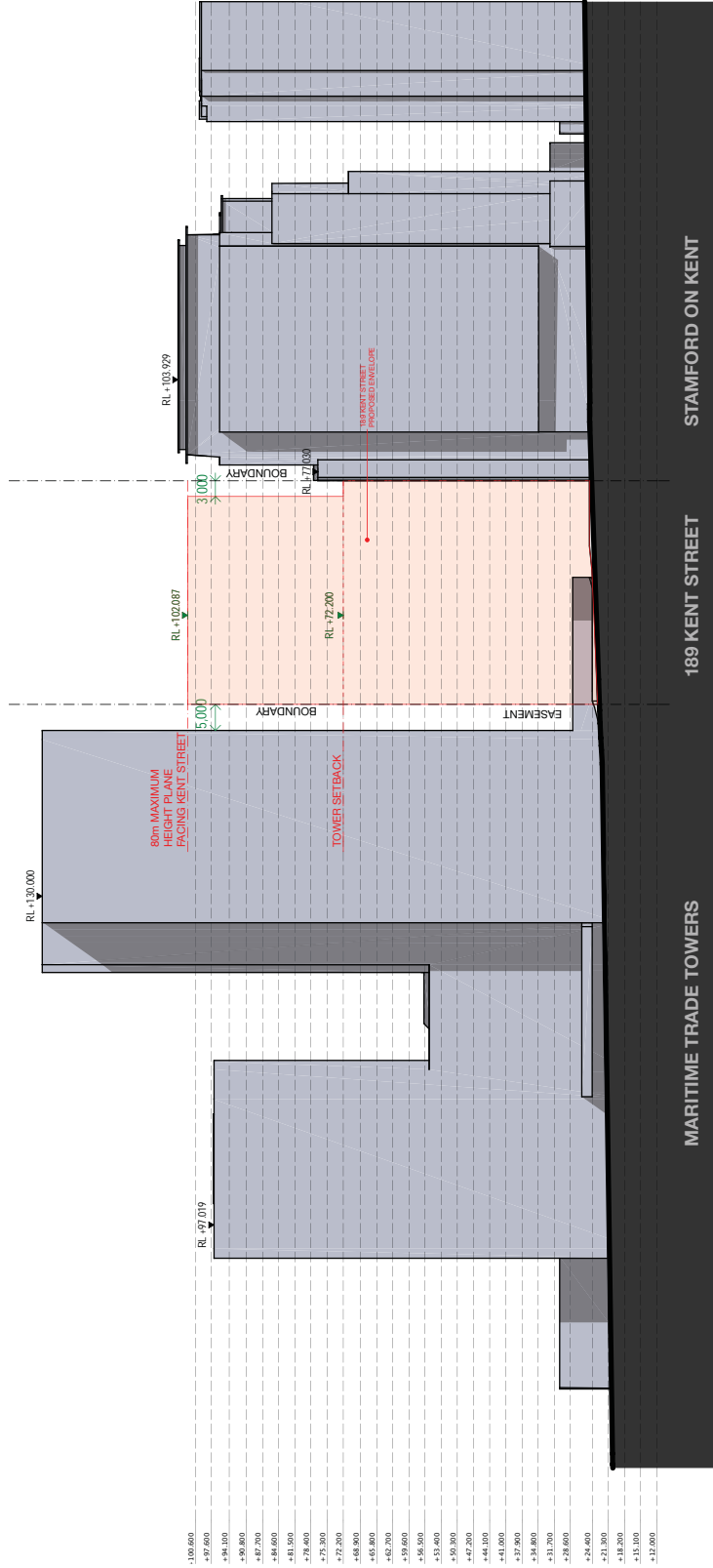
KENT STREET



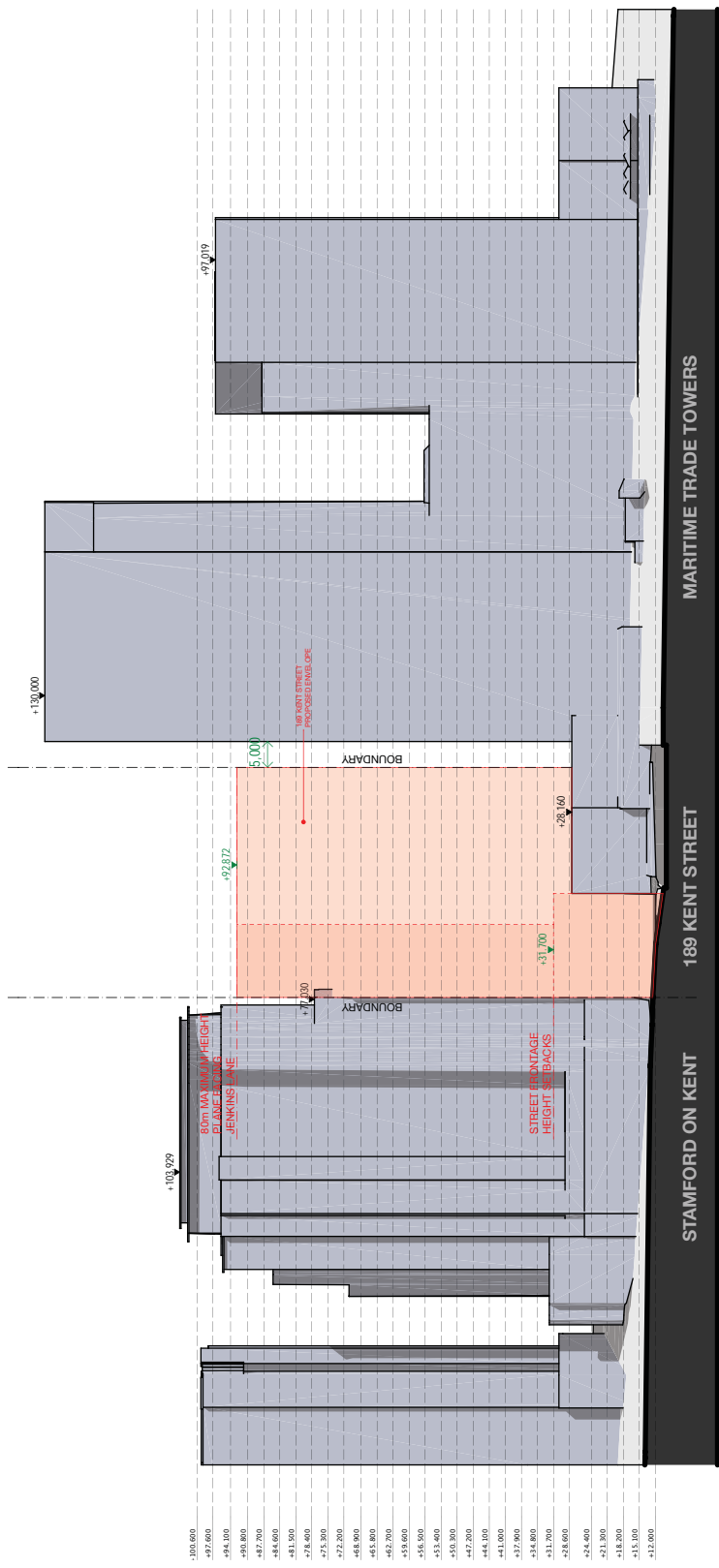
3 PLAN Level ZZ
1:200

ATTACHMENT A

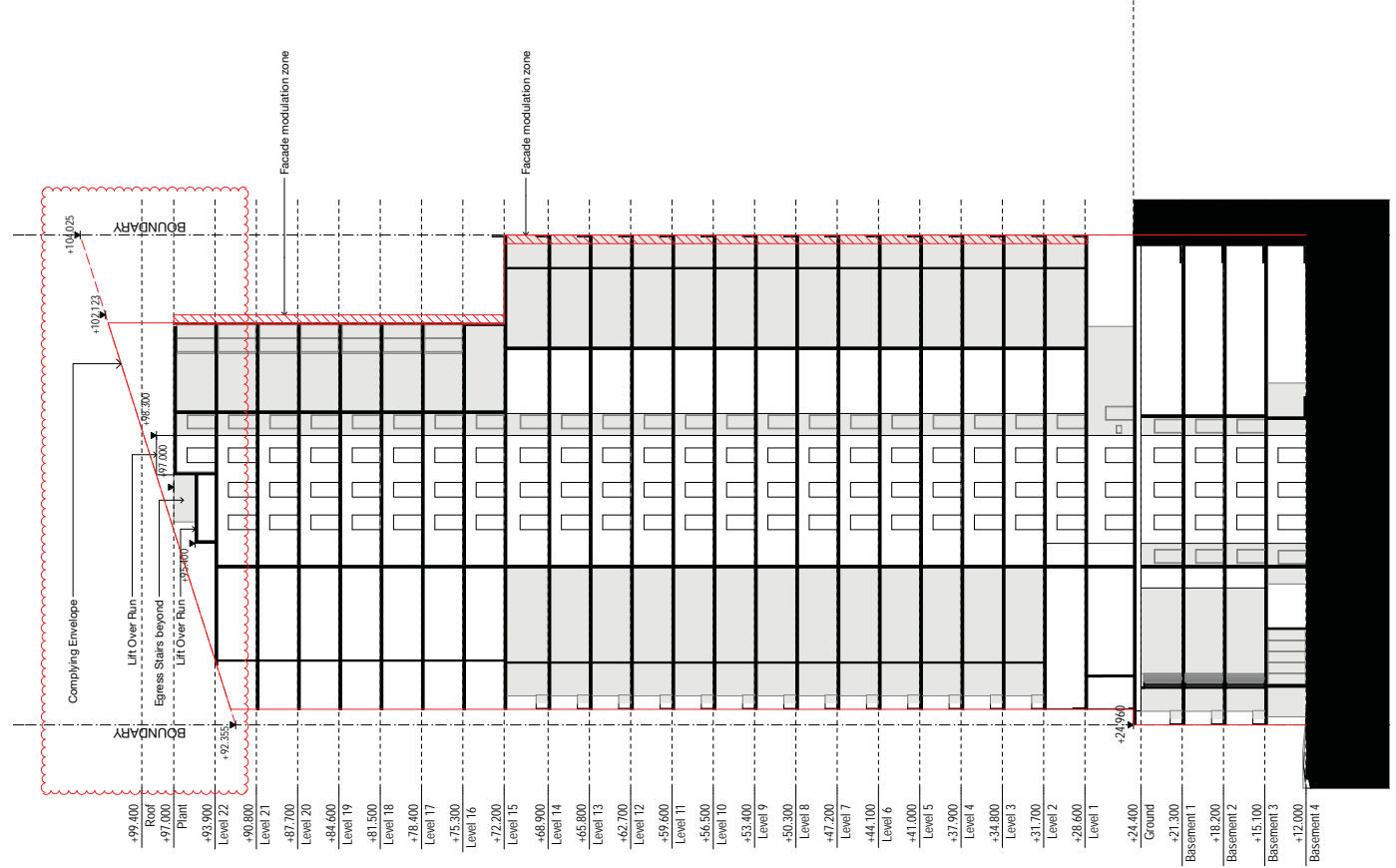
ATTACHMENT A



ATTACHMENT A



ATTACHMENT A

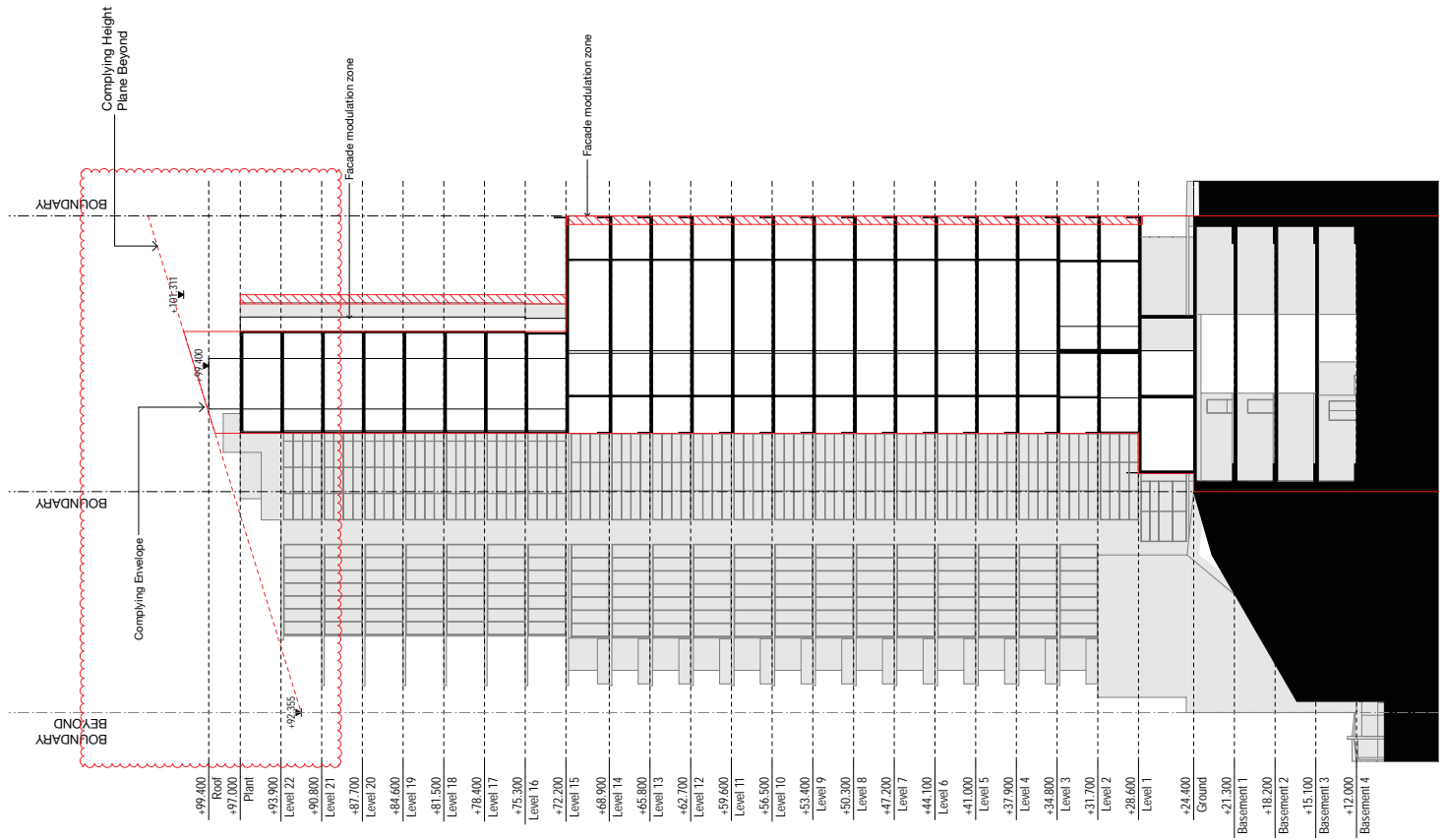


AMENDMENTS:
 1. Section re-aligned to show revisions to Lift Over Run and Fire Egress Stairs

1 ELEVATION - Section - towards Stamford on Kent North
 1:200

Section - towards Stamford on Kent North
 BARANIA GROUP - 189 Kent Street

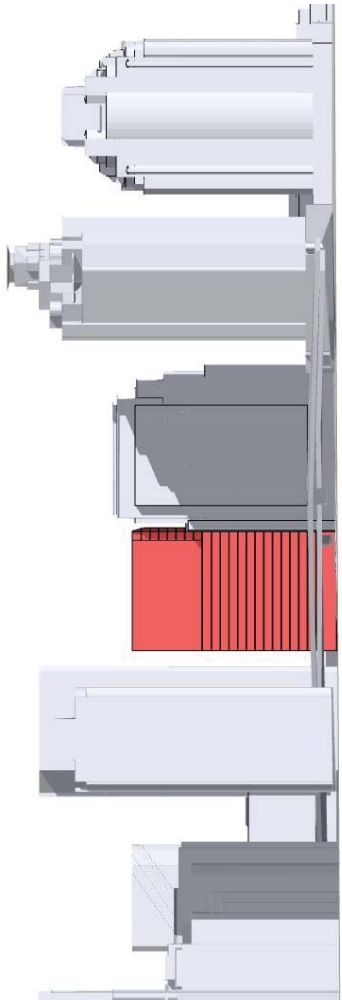
ATTACHMENT A



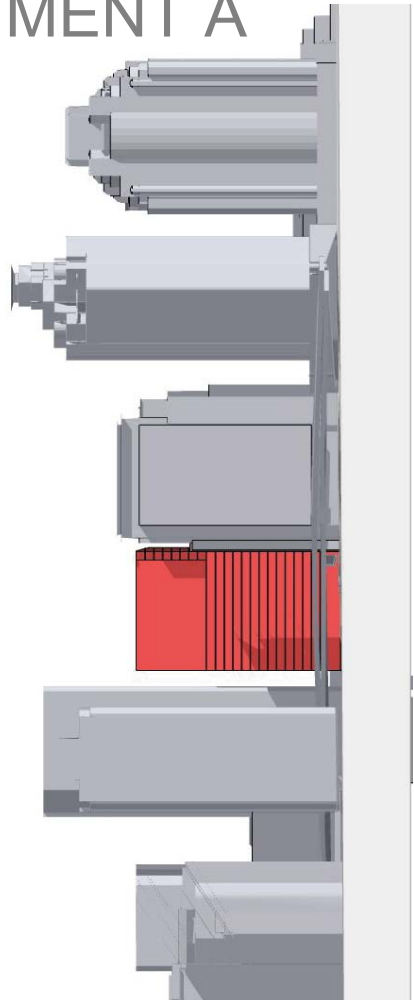
1 ELEVATION Section - towards Stamford on Kent South
 1:200

Section - towards Stamford on Kent South
 BARANIA GROUP - 199 Kent Street

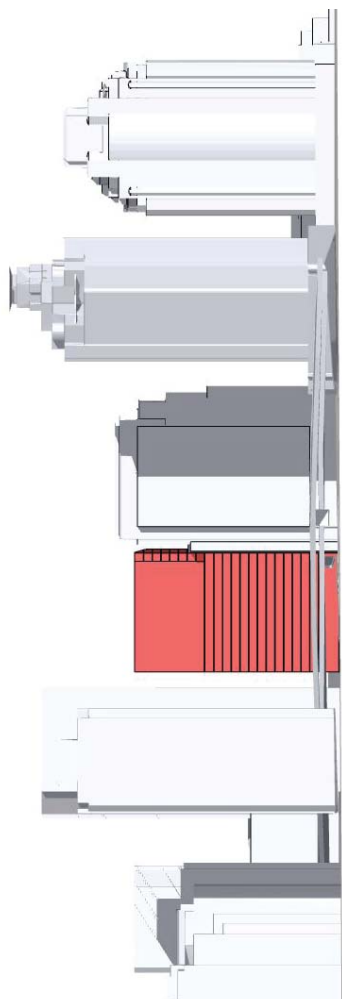
ATTACHMENT A



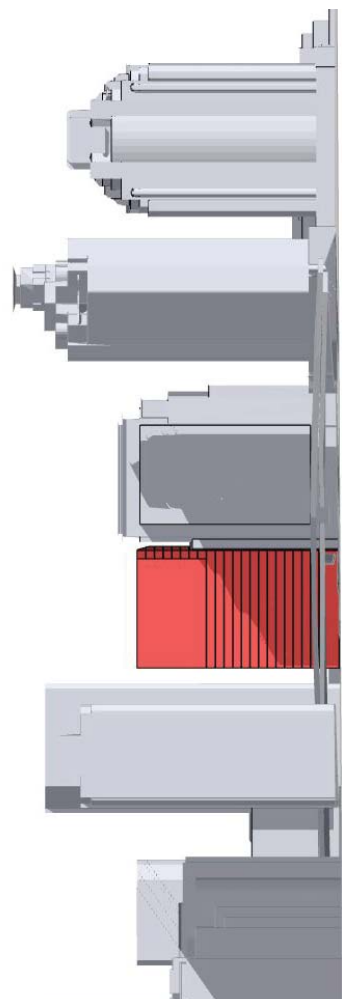
10am
21st June



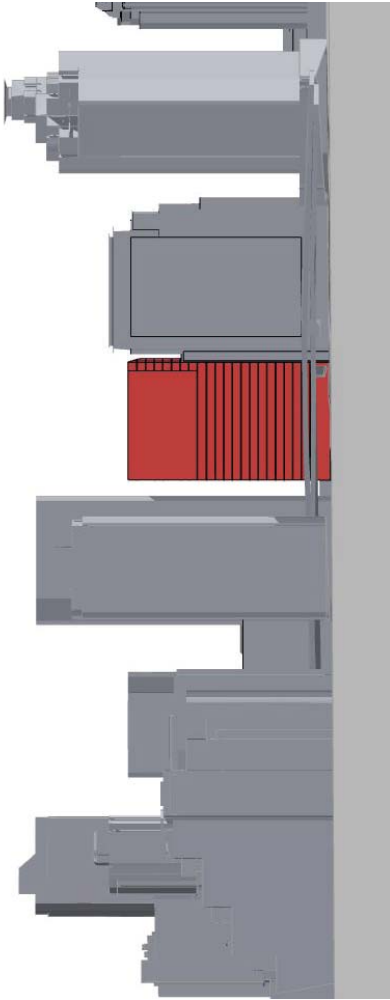
12noon
21st June



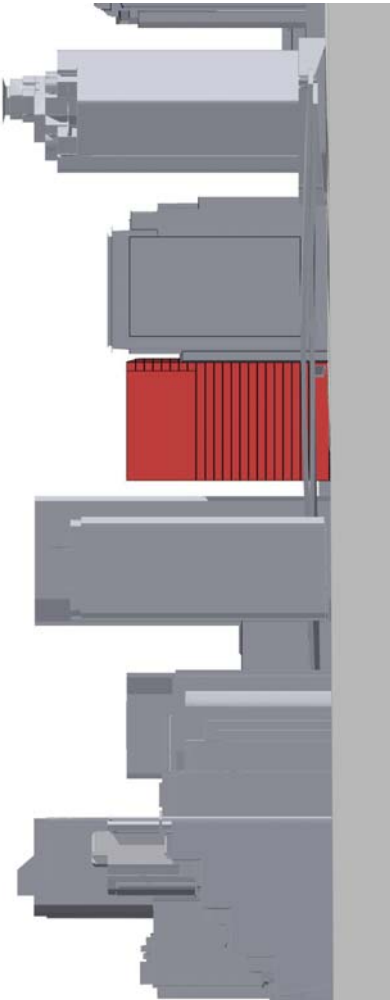
9am
21st June



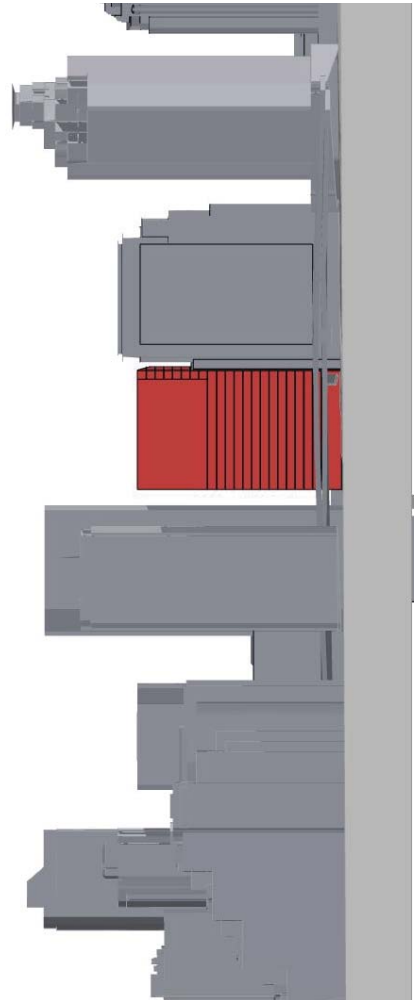
11am
21st June



2pm
21st June



1pm
21st June



3pm
21st June

ATTACHMENT A